

# 光电开关

## LG-ITR0226

### FEATURES

Dimensions: 4.4mm × 2.7mm × 2.8mm  
Ultra-compact, SMD type, 2.0mm pitch  
High sensitivity, fast response  
Shields ambient light, strong anti-interference  
Low power consumption, high reliability  
Lead-free, RoHS compliant

### DESCRIPTIONS

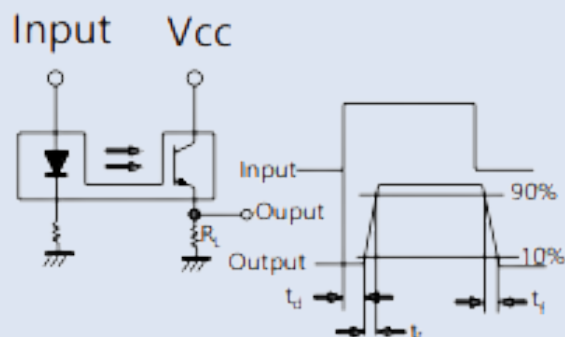
The LG-ITR0226 consists of an IR LED (940nm) and a PT phototransistor. The IR LED and PT are oppositely housed within a black material that blocks external light. Under normal conditions, the PT phototransistor can only receive signals from the IR LED. When an object obstructs the path between them, the PT phototransistor is unable to receive the IR LED's signal.



### APPLICATION

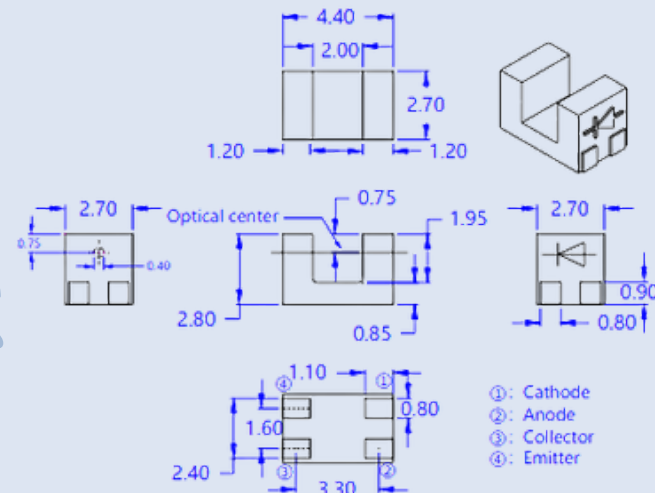
- ★Sweeping Robot
- ★Mouse
- ★Non-contact Switch
- ★Digital Camcorder
- ★Various Microcomputer-Controlled Devices

### RESPONSE TIME CIRCUIT PRINCIPLE



td: Delay Time  
tr: Rise Time  
tf: Fall Time

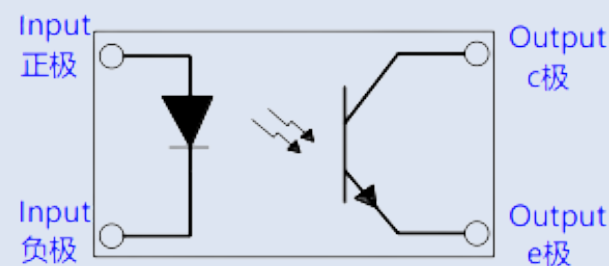
### PACKAGE DIMENSIONS



### NOTS

All dimensions are in mm, and unless otherwise specified, the tolerance is  $\pm 0.2\text{mm}$ .

### CIRCUIT PRINCIPLE



# 光电开关

## LG-ITR20403-S



DEVICE NO.	CHIP MATERIAL	LENS COLOR
IR	GaAs	Black
PT	Silicon	Black

### DESCRIPTIONS

LG-ITR20403-S consists of an IR LED (940nm) and a PT phototransistor. The IR LED and PT phototransistor are oppositely encapsulated inside a black high-temperature-resistant material, which shields external light. Under normal conditions, the PT phototransistor can only receive signals from the IR LED. When an object blocks the path between the IR LED and the PT phototransistor, the PT phototransistor cannot receive the signal from the IR LED.

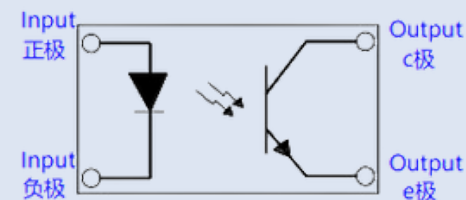
### APPLICATION

- ★ Camera
- ★ Copier
- ★ Scanner
- ★ Non-contact switch
- ★ Various microcomputer-controlled devices

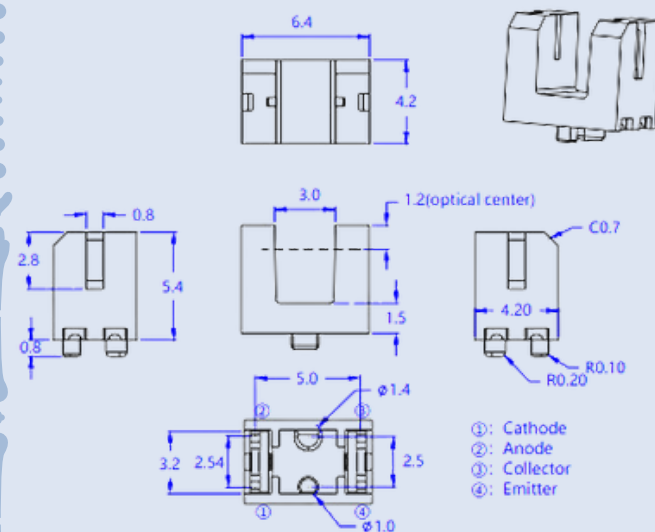
### FEATURES

Dimensions: 6.4×4.2×5.4mm  
Miniature, SMD patch type, pitch 3.0mm  
High sensitivity, fast response  
Shields external light, strong anti-interference capability  
Low power consumption, high reliability  
Lead-free, compliant with RoHS standards

### PACKAGE DIMENSIONS



外观尺寸



### NOTS

1. All dimensions are in millimeters.
2. Tolerance is  $\pm 0.20\text{mm}$  unless otherwise noted.

# 光电开关

## LG-ITR20403-C

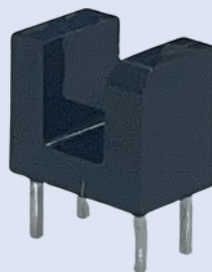
DEVICE NO.	CHIP MATERIAL	LENS COLOR
IR	GaAs	Black
PT	Silicon	Black

### DESCRIPTIONS

The LG-ITR20403-C consist of an infrared emitting diode and a silicon phototransistor, encased side-by-side on converging optical axis in a black thermoplastic housing.

The phototransistor receives radiation from the IR LED only. This is the normal situation.

But when an object is in between, phototransistor could not receives the radiation.



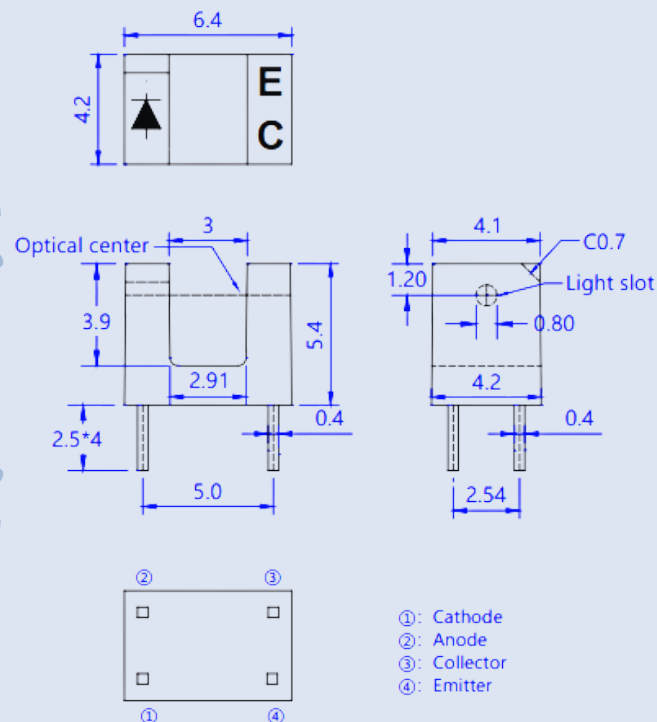
### APPLICATION

- ★ Mouse Copier
- ★ Switch Scanner
- ★ Floppy disk driver
- ★ Non-contact Switching
- ★ For Direct Board

### FEATURES

Fast response time  
High analytic  
Cut-off visible wavelength  $\lambda_p=940\text{nm}$   
High sensitivity  
Pb free  
The product itself will remain within RoHS compliant version

### PACKAGE DIMENSIONS

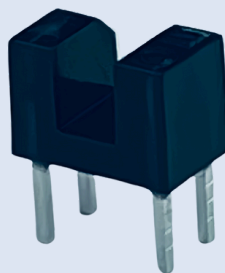


### NOTS

1. All dimensions are in millimeters.
2. Tolerance is  $\pm 0.20\text{mm}$  unless otherwise noted.
3. Lead spacing is measured where the leads emerge from the package.

# 光电开关

## LG-ITR2151-C



DEVICE NO.	CHIP MATERIAL	LENS COLOR
IR	GaAs	Black
PT	Silicon	Black

### APPLICATION

- ★Mouse Copier
- ★Switch Scanner
- ★Floppy disk driver
- ★Non-contact Switching
- ★For Direct Board

### FEATURES

- Fast response time
- High analytic
- Cut-off visible wavelength  $\lambda_p=940\text{nm}$
- High sensitivity
- Pb free
- The product itself will remain within RoHS compliant version

### DESCRIPTIONS

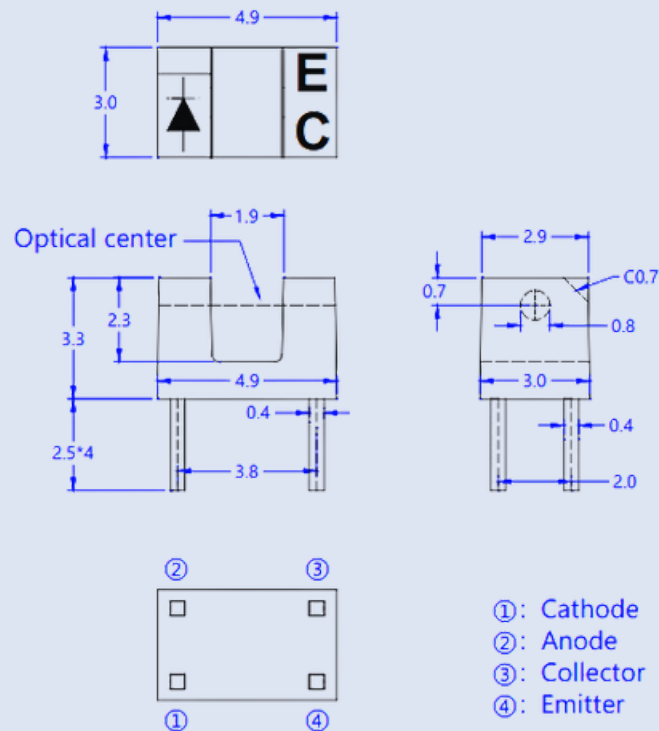
The LG-ITR2151-C consist of an infrared emitting diode and a silicon phototransistor, encased side-by-side on converging optical axis in a black thermoplastic housing.

The phototransistor receives radiation from the IR LED only.

This is the normal situation.

But when an object is in between, phototransistor could not receives the radiation.

### PACKAGE DIMENSIONS



### NOTS

1. All dimensions are in millimeters.
2. Tolerance is  $\pm 0.20\text{mm}$  unless otherwise noted.
3. Lead spacing is measured where the leads emerge from the package.

# 光电开关

## LG-ITR2C-502725

对标亿光料号 ITR9707

DEVICE NO.	CHIP MATERIAL	LENS COLOR
IR	GaAlAs	Water Clear
PT	Silicon	Water Clear

### DESCRIPTIONS

The LG-ITR2C-502725 consist of an infrared emitting diode and an NPN silicon phototransistor, encased side-by-side on converging optical axis in a black Thermoplastic Housing The phototransistor receives radiation from the IRED only .This is the normal Situation. But when an object is in between , phototransistor could not receives the radiation.



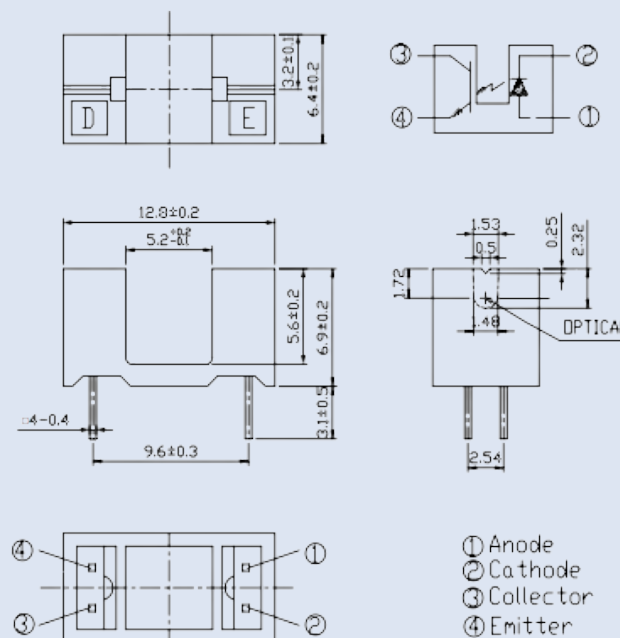
### APPLICATION

- ★Mouse Copier
- ★Switch Scanner
- ★Floppy disk driver
- ★Non-contact Switching
- ★For Direct Board

### FEATURES

- Fast response time
- High analytic
- Cut-off visible wavelength  $\lambda_p=940\text{nm}$
- High sensitivity
- Pb free
- The product itself will remain within RoHS compliant version

### PACKAGE DIMENSIONS



### NOTS

1. All dimensions are in millimeters.
2. Tolerances unless dimensions ±0.2mm.

# 光电开关

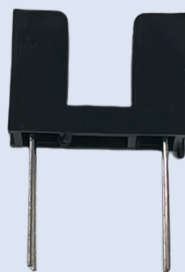
## LG-ITR2C-553924

对标亿光料号 ITR9606

DEVICE NO.	CHIP MATERIAL	LENS COLOR
IR	GaAlAs	Water Clear
PT	Silicon	Black

### DESCRIPTIONS

The LG-ITR2C-553924 consist of an infrared emitting diode and an NPN silicon phototransistor, encased side-by-side on converging optical axis in a black Thermoplastic Housing. The phototransistor receives radiation from the IRED only. This is the normal Situation. But when an object is in between, phototransistor could not receives the radiation.



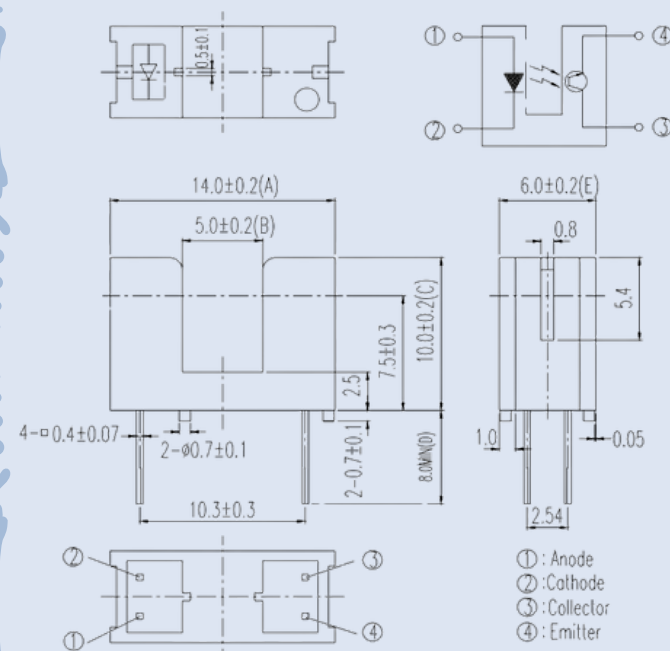
### APPLICATION

- ★ Mouse Copier
- ★ Switch Scanner
- ★ Floppy disk driver
- ★ Non-contact Switching
- ★ For Direct Board

### FEATURES

- Fast response time
- High analytic
- Cut-off visible wavelength  $\lambda_p=940\text{nm}$
- High sensitivity
- Pb free
- the product itself will remain within RoHS compliant version

### PACKAGE DIMENSIONS



### NOTS

1. All dimensions are in millimeters.
2. Tolerances unless dimensions  $\pm 0.25\text{mm}$ .
3. Lead spacing is measured where the lead emerge from the package.

# 光电开关

## LG-ITR2C-554624

对标亿光料号 ITR8402

DEVICE NO.	CHIP MATERIAL	LENS COLOR
IR	GaAlAs	Water Clear
PT	Silicon	Water Clear

### DESCRIPTIONS

The LG-ITR2C-554624 consist of an infrared emitting diode and an silicon phototransistor, encased side-by-side on converging optical axis in a black thermoplastic housing. The phototransistor receives radiation from the IR LED only .This is the normal situation. But when an object is in between , phototransistor could not receives the radiation.



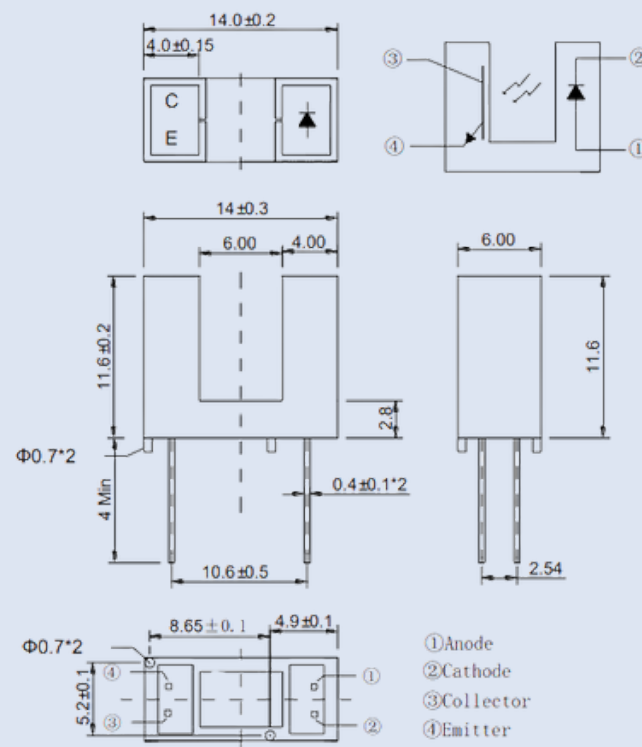
### APPLICATION

- ★Mouse Copier
- ★Switch Scanner
- ★Floppy disk driver
- ★Non-contact Switching
- ★For Direct Board

### FEATURES

- Fast response time
- High analytic
- Cut-off visible wavelength  $\lambda_p=940\text{nm}$
- High sensitivity
- Pb free
- The product itself will remain within RoHS compliant version

### PACKAGE DIMENSIONS



### NOTS

1. All dimensions are in millimeters.
2. Tolerance is  $\pm 0.20\text{mm}$  unless otherwise noted.
3. Lead spacing is measured where the leads emerge from the package.

# 光电开关

## LT-ITR8307S



DEVICE NO.	CHIP MATERIAL	LENS COLOR
------------	---------------	------------

IR	GaAs	/
----	------	---

PT	Silicon	/
----	---------	---

### DESCRIPTIONS

LT-ITR8307S is a reflective photoelectric switch that includes a GaAs infrared LED emitter and a highly sensitive NPN phototransistor receiver, suitable for short-range detection and operating in the infrared spectral range.

These two components are installed side by side in a plastic package.

This photoelectric switch has the characteristics of fast response speed, high sensitivity, strong anti-interference ability, low power consumption, small size, and strong reliability.

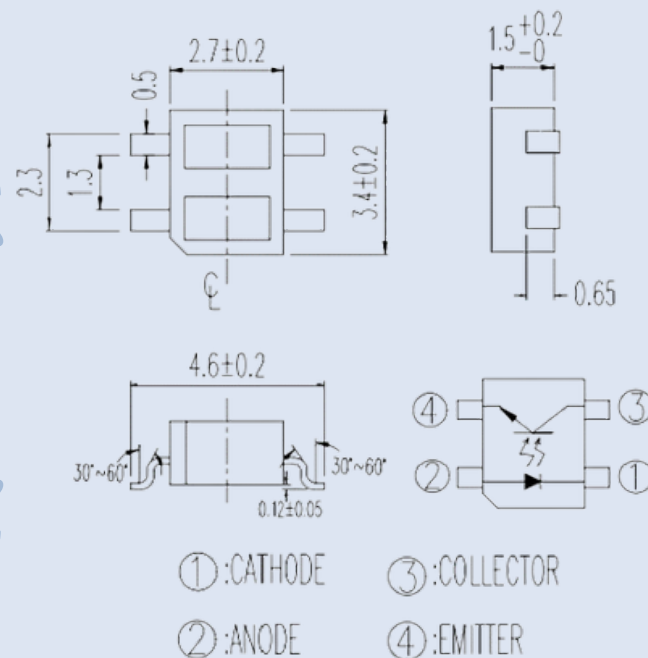
### APPLICATION

- ★Camera
- ★Mouse Copier
- ★Switch Scanner
- ★Floppy disk driver
- ★Non-contact Switching
- ★For Direct Board
- ★Various microcomputer control equipment

### FEATURES

- Fast response time
- High sensitivity
- Cut-Off visible wavelength
- Strong anti-interference ability
- Thin
- High reliability
- Compact

### PACKAGE DIMENSIONS



### NOTS

1. All dimensions are in millimeters
2. Tolerances unless dimensions  $\pm 0.15\text{mm}$